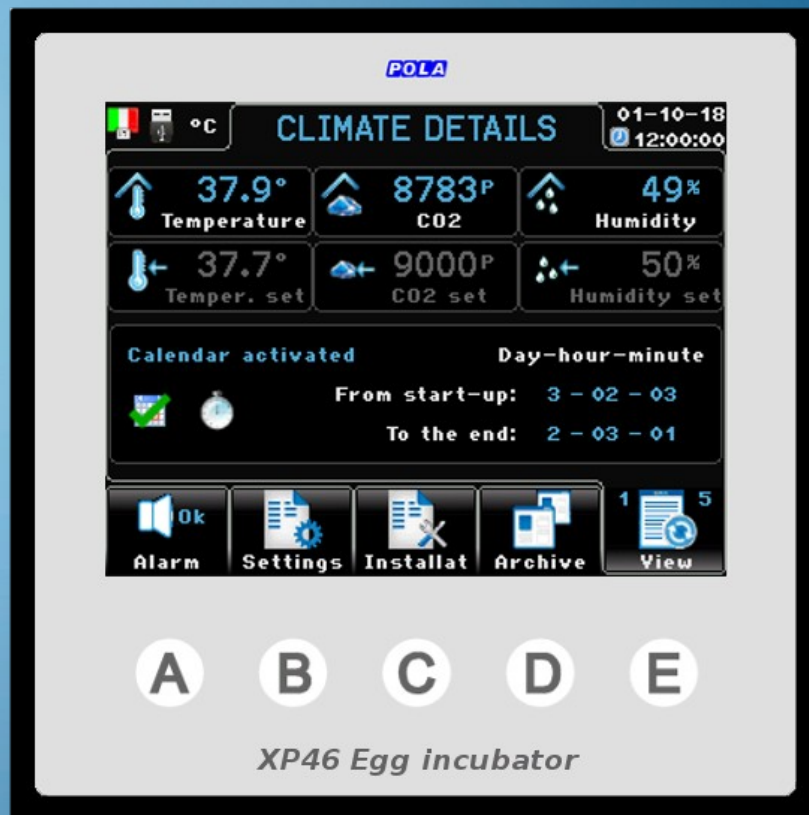


XP line
small size, great power



XP46 Egg incubator

Main feature

The main feature of the XP46 is the color display screen (3.5") with 320x240 dots resolution with led backlighting. XP46 is made in DIN 96x96 format and the module dimensions are 96x96mm.

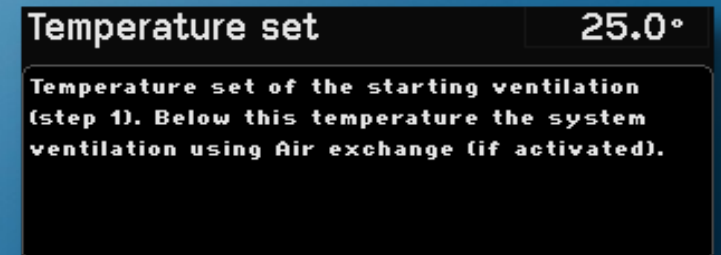


The user interface is easy and friendly. The easy touch screen system gives both the typical "easy to use" approach of a touch screen system and the strength and mechanical protection of a polycarbonate IP54 keyboard.

At every screen the function keys display a different graphic making the program very user friendly.

The user can select the display language: all the wordings, acronyms and "help" texts for programming assistance will be displayed in the chosen language.

Each programming step has its own help screen so the program has a "built in" instruction manual.



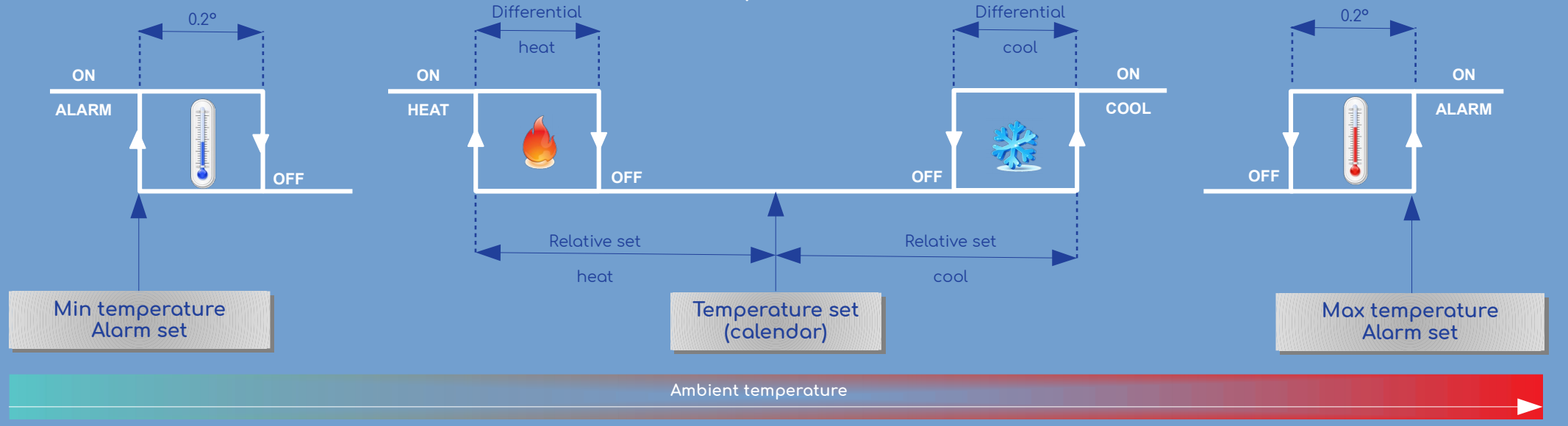
Egg incubator control



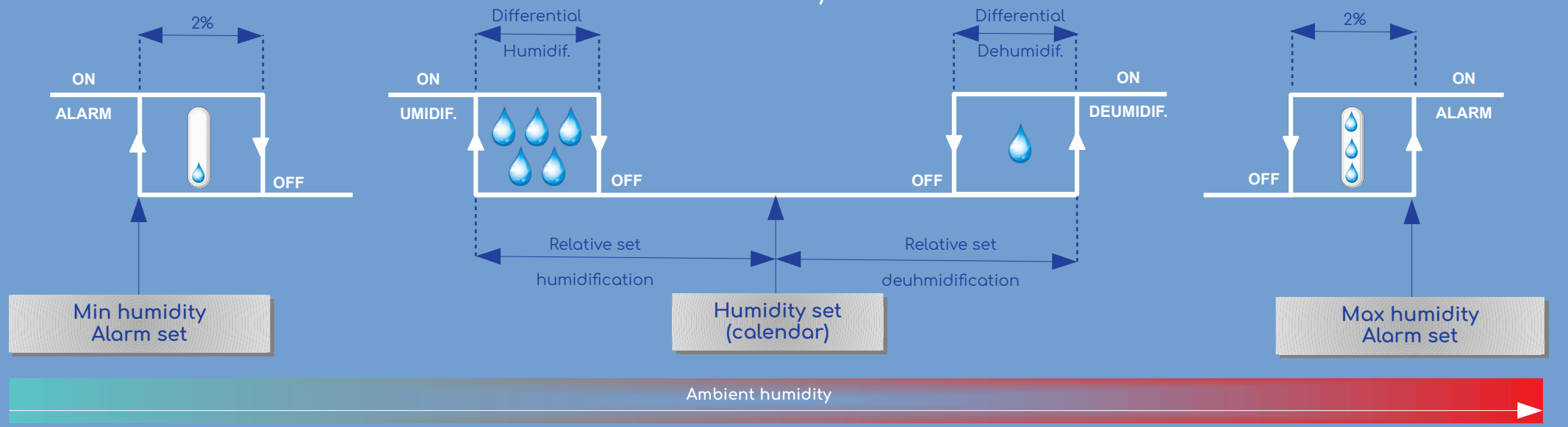
XP46 temperature/humidity/CO2 egg incubator control

Operating diagrams

Temperature



Humidity

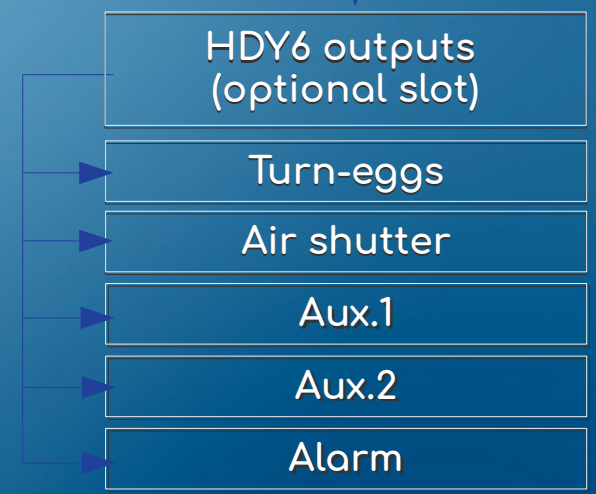


Inputs and outputs



Other available connections

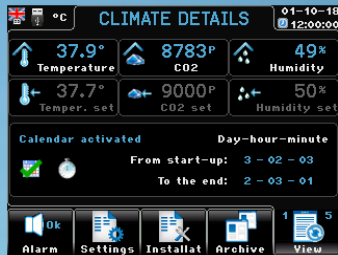
- **USB plug**
XP46 has a USB plug on the back. When selecting the USBP option you can get a USB plug with a (IP65) protection cap externally mounted so you can access the USB without having to go to the back of the unit.
- **XNET**
Network connection card (optional) for XP46 processor ([see remote supervision](#)).



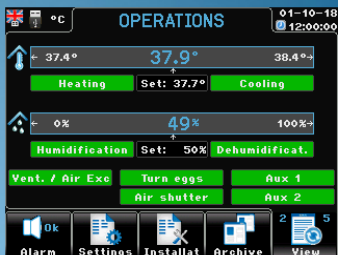
Sample screenshots



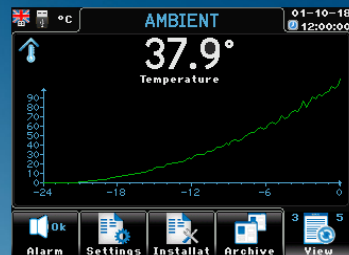
Viewing screens



Viewing operating condition



Viewing operating condition



Viewing operating condition



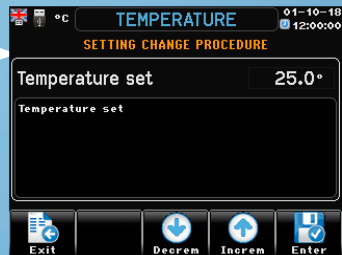
Output state



Settings screens



Settings selection



Temperature setting



Humidity setting



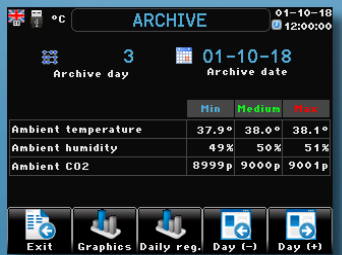
Alarm settings



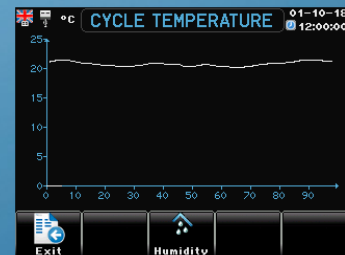
Archive screen



Archives to display selection



Cycle temperature archive

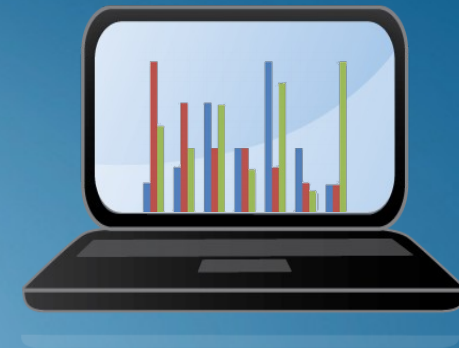


Cycle temperature chart



Total cycle archive

Data transfer



The communication with the outside world is performed by USB key.

→ **Export archives**

XP46 save in the USB memory a file containing all the day by day recorded data of the cycle.

Connecting the USB key to a PC and by using the XP46 Dialogue software you can browse the recorded data in grid or graph formats.

→ **Importing / saving the setting**

You can save a file with all back-up infos on a USB file.

Saved settings can be uploaded on XP66 anytime by a user friendly procedure.

Sensors type selection

Temperature



SX

Ambient temperature probe

Humidity



SXPS

Wet bulb temperature probe
(for psychrometric measure)

Or



RHR + HA20s

0...100% humidity probe
+ Power supply

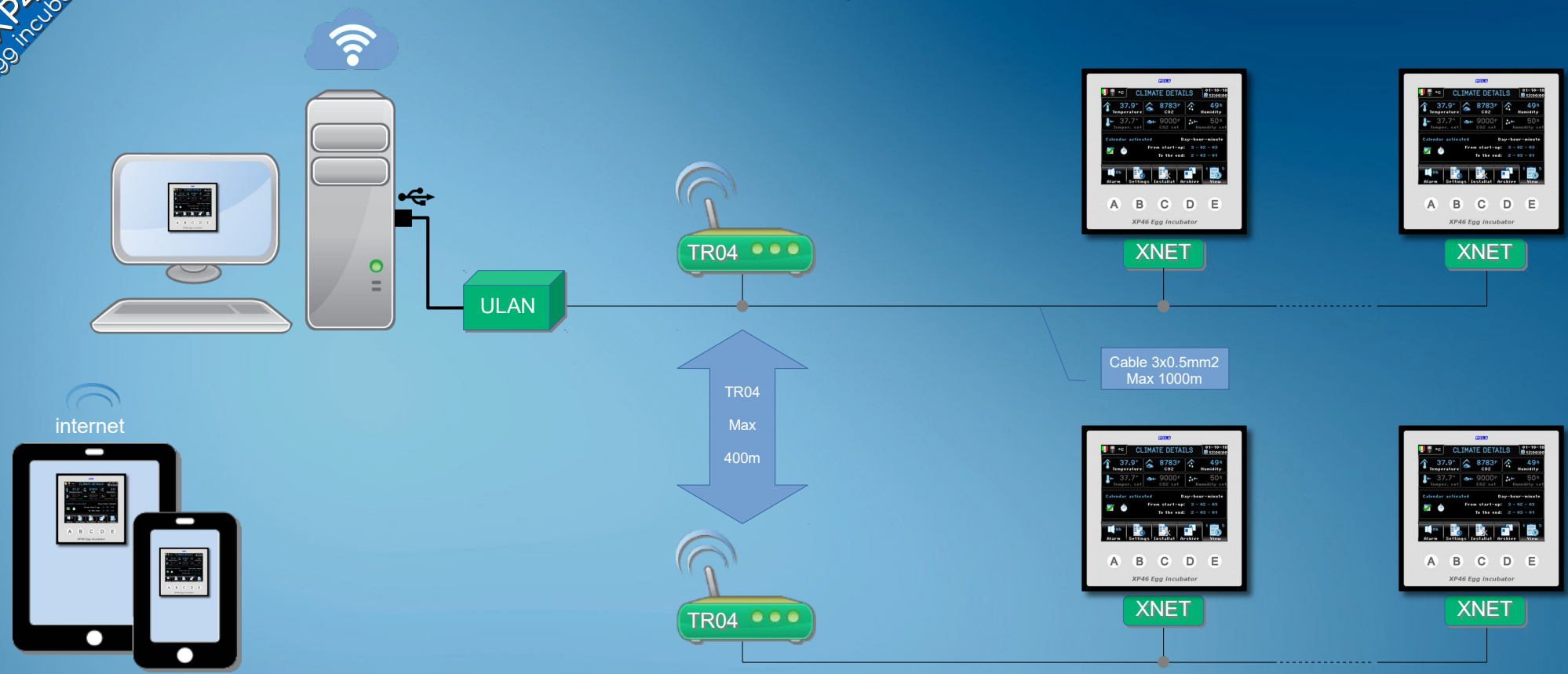
CO2



CO2E + HA20s

CO2 probe 0...10,000ppm
+ Power supply

Remote supervision



Remote supervision of XP46 processors grants the full management of system by PC.

The XP46 Net Pro supervision software enables the full remote control of network connected processors. ULAN peripheral is connected to PC through a USB connection. XP46 – ULAN connection is done by a simple 3 wires cable. In all cases where ULAN cannot be cabled to XP46 we can supply TR04 radio-modems with a reach of 400 mt.

Components for creating a supervision system:

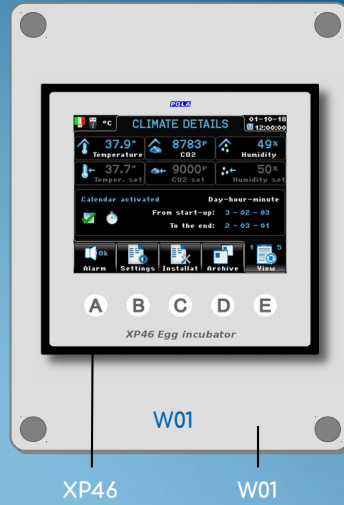
- ULAN: Network server Pc (with USB connection)
- XNET: Network adapter card (one for each XP46)
- TR04: Radio-modem 485 (optional, to be used only when it is not possible to use the cable)

Available options

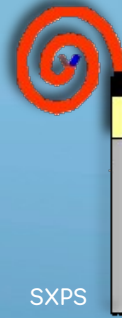
<i>Model</i>	<i>Description</i>
XP46	Egg incubator control (DIN96 panel mounting)
<i>----- Optionals -----</i>	
W01	IP54 box for wall mounting + gasket + transparent cover
USBP	USB IP65 external plug (to be mounted externally, for access to the USB without the need to access the back of the XP46)
HDY6	Relays extension slot
SX	Temperature probe
SXPS	Wet bulb temperature probe (for psychometric measure)
RHR	0...100% humidity probe
CO2E	CO2 probe 0...10.000ppm
HA20s	Power pack for RHR/CO2E
XNET	Network nodal point
ULAN	Network server Pc (with USB connection)
TR04	Radio-modem 485 (IP55 junction box with power supply 230/12v)



Available options



SX



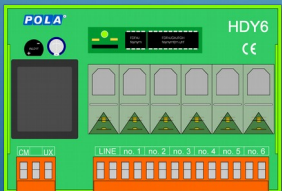
SXPS



RHR



CO2E



HDY6



HA20s



ULAN



XNET



USBP



TR04

POLA

www.pola.it

40th

40 YEARS OF INNOVATION