

XP line  
small size, great power



XP62 silos weight controller

## Main feature

The main feature of the XP62 is the color display screen (3.5") with 320x240 dots resolution with led backlighting. XP62 is made in DIN 96x96 format and the module dimensions are 96x96mm.



The user interface is easy and friendly. The easy touch screen system gives both the typical "easy to use" approach of a touch screen system and the strength and mechanical protection of a polycarbonate IP54 keyboard.

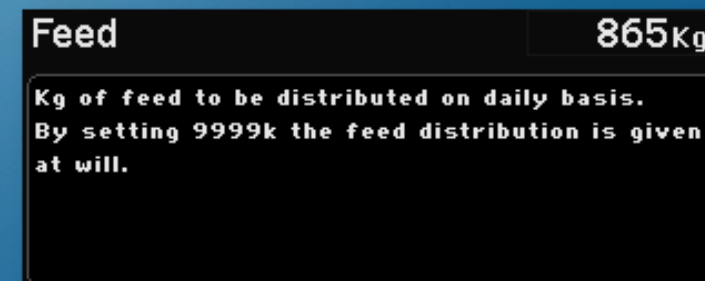


At every screen the function keys display a different graphic making the program very user friendly.

The user can select the display language: all the wordings, acronyms and "help" texts for programming assistance will be displayed in the chosen language.



Each programming step has its own help screen so the program has a "built in" instruction manual.



# Manages feeding control

**FEEDING LINES**

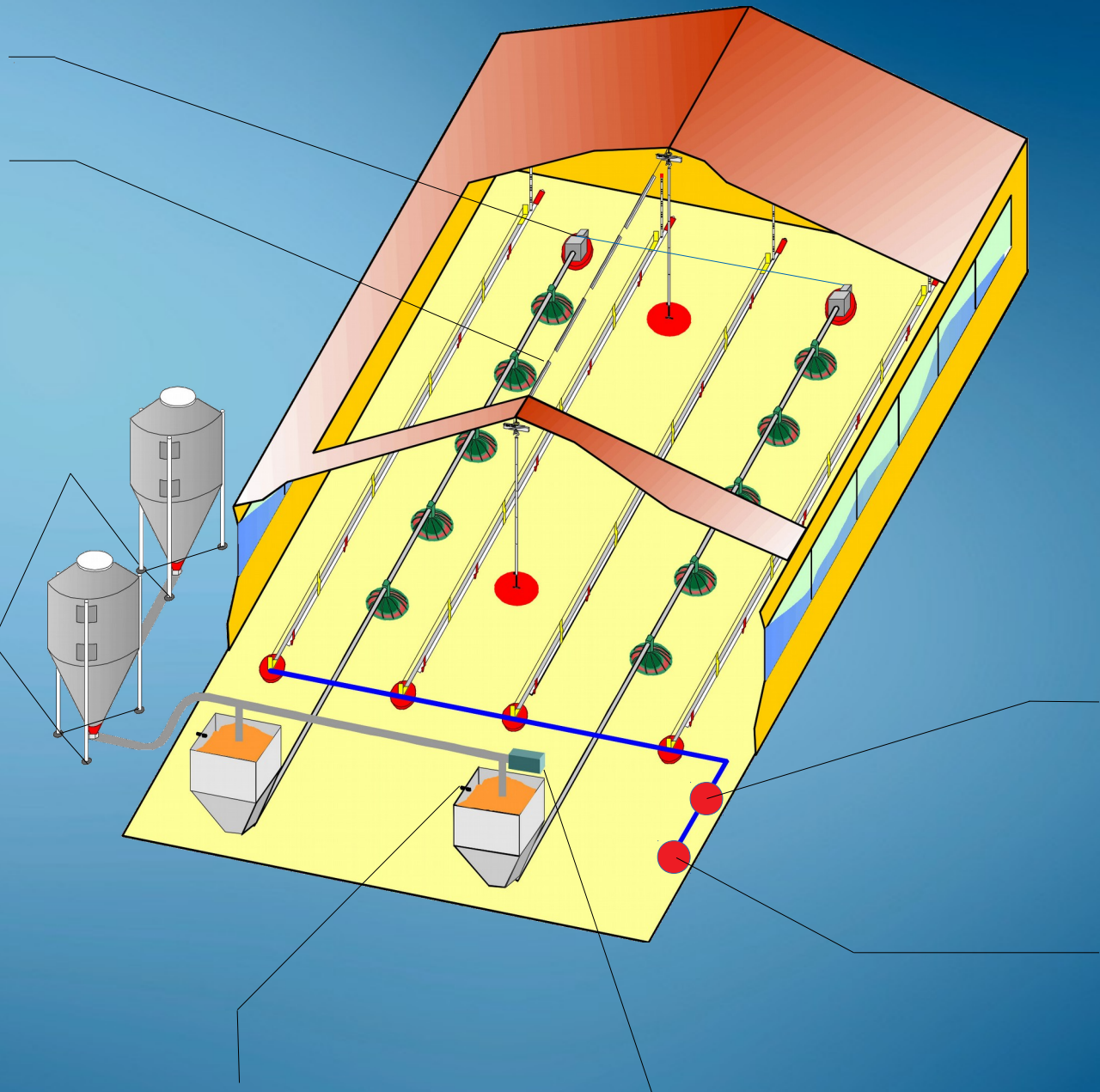
**LIGHTS**  
Lights can be controlled by On/Off output.

**FEED MANAGEMENT**  
Detection and recording of feed consumption done by load cells.  
Automatic detection of silo uploading.

Current silo weight **5682kg**  
Silo loading in progress  
Loaded feed **917kg**

**ARCHIVES**  
Daily records (500 days) of:  
- Feed consumption  
- Water consumption  
- Water/feed ratio

ARCHIVE 01-03-18 12:00:00  
At will  
Progr. feed  
864kg Dist. feed  
41 Archive day  
1528L Dist. water  
26-02-18 Archive date  
1.76 Water/Feed



**HOPPER LIMIT SENSOR**

**STARTING TIMES**  
It is possible to program up to a maximum of 8 periods for each single function.

STARTING TIMES 01-03-18 12:00:00  
Meal times  
Light times  
Water times  
Free timer times

**WATER METER**  
Water distribution is programmable at preset times and consumption is recorded by the water meter. Water level is kept under constant control to prevent problems.

1528Lt Dist. water  
1.76 Water/Feed

**WATER VALVE**

**SILo AUGER**

# Load cells connection

is a repeater of the silos weight so the value can be easily read near the silos.  
It has been designed for outdoor installation and 1 units can be connected for each silos.  
It can be connected to the 485 weight bus, available on the TLC2 load cells amplifier located near the silos.

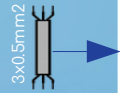
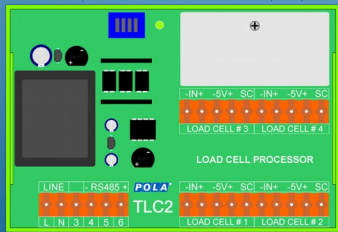


HP63/W  
Silos weight  
repeater



CN5+U10  
Load cell 5000Kg IP68,  
compression type,  
stainless steel complete  
with cable and sheath  
from 5 mt.

TLC2  
Silo load cells digital  
amplifier

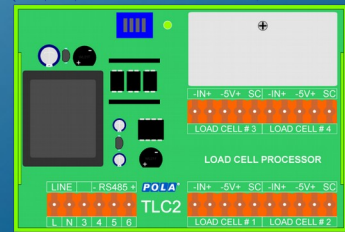
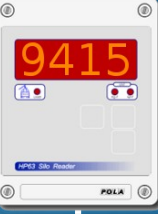


CN5+U10  
Load cell 5000Kg IP68,  
compression type,  
stainless steel complete  
with cable and sheath  
from 5 mt.

TLC2  
Silo load cells digital  
amplifier



HP63/W  
Silos weight  
repeater



# Inputs and outputs



## Other available connections

- **USB plug**  
XP62 has a USB plug on the back. When selecting the USBP option you can get a USB plug with a (IP65) protection cap externally mounted so you can access the USB without having to go to the back of the unit.
- **XNET**  
Network connection card (optional) for XP62 processor ([see remote supervision](#))

HDY6 outputs  
(optional module)

Silo 1 Kg distributed  
counter signal

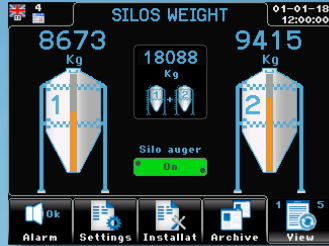
Silo 2 Kg distributed  
counter signal

Alarm

# Sample screenshots



Viewing screens



Viewing operating condition

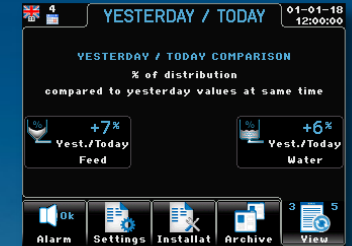


Viewing silo load

PROGRAM STATE 01-01-18 12:00:00

Feed distribution	Yes
Number meal in progress	1
Meal hours	No
Stop for minimum feed flow	No
Silo auger delay	No
Waiting restart after silo upload	No
Silo upload in progress	No
Hopper level sensor full	Yes

Viewing program state



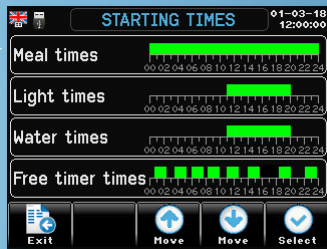
Viewing yesterday/today meal comparison



Settings screens



Settings selection



Starting times selection

MEAL TIMES 01-03-18 12:00:00

Start hour 1	00:00
Stop hour 1	23:59
Start hour 2	00:00
Stop hour 2	00:00

Schedule meal times (up to 8 programmable periods)



Feed to distribute setting



Archive screen



Archive to display selection

ALARMS ARCHIVE 01-03-18 12:00:00

Alarm type	Date	Hour
Meal unfinished	15-01-18	10:54
Low stock	15-01-18	09:23
Silo download minimum	14-01-18	20:54
Silo download maximum	14-01-18	16:43
Silo upload signal	11-01-18	05:32
Water minimum	11-01-18	03:12
Water maximum	09-01-18	05:32
Silo upload signal	11-01-18	01:32

Alarms archive

EVENTS ARCHIVE 01-03-18 12:00:00

Event type	Date	Hour
Power restored	15-01-18	10:54
Power failure	15-01-18	09:23
Manual test entry	14-01-18	20:54
Power restored	14-01-18	16:43
Power failure	11-01-18	05:32
Update procedure	11-01-18	03:12
Manual test entry	09-01-18	05:32
Power failure	11-01-18	01:32

Events archive



Feeding archive

SILO UPLOAD ARCHIVE 01-01-18 12:00:00

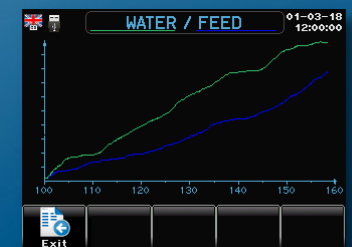
Silo upload done	Date	Hour
4215 Kg (Silo 1)	01-01-18	10:54
6782 Kg (Silo 2)	01-01-18	09:32

Silo upload archive

CYCLE TOTAL 01-01-18 12:00:00

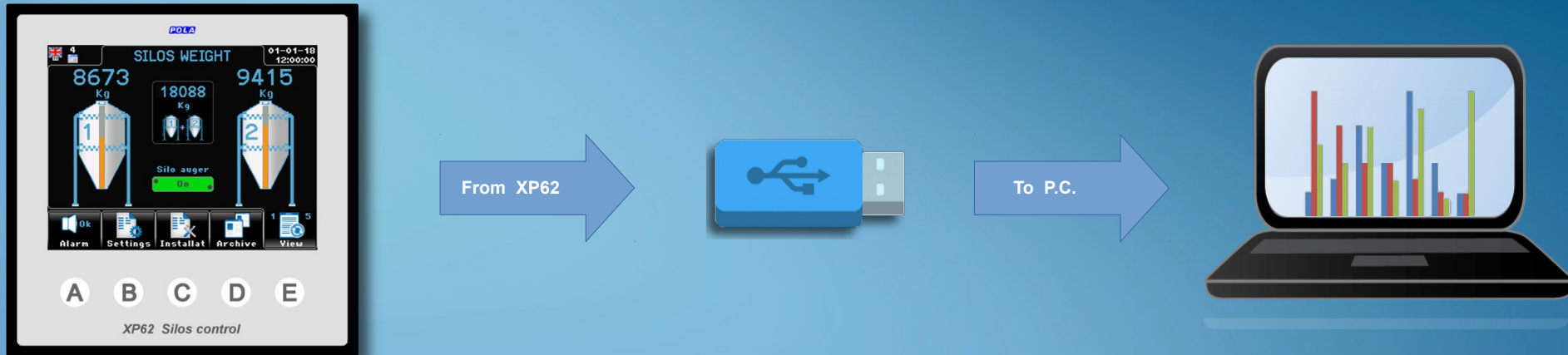
Feeding	
Feed total	86Qls
Water total	174Qls
Water/Feed	2.02
Silo	
Silo 1 total upload	42Qls
Silo 2 total upload	67Qls

Cycle total archive



Feeding chart

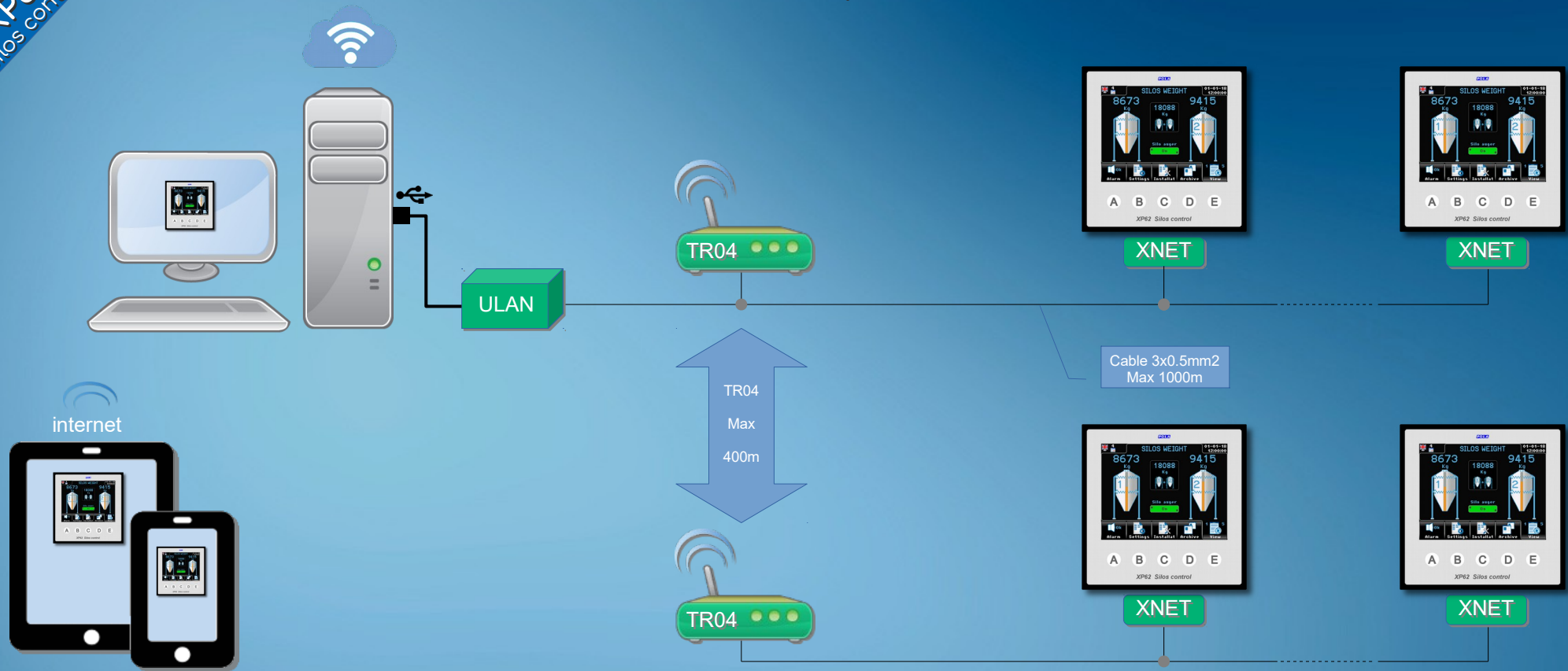
## Data transfer



The communication with the outside world is performed by USB key

- **Export archives**  
XP62 save in the USB memory a file containing all the day by day recorded data of the cycle.  
Connecting the USB key to a PC and by using the XP62 Dialogue software you can browse the recorded data in grid or graph formats.
- **Importing / saving the setting**  
You can save a file with all back-up infos on a USB file.  
Saved settings can be uploaded on XP62 anytime by a user friendly procedure.

# Remote supervision



Remote supervision of XP62 processors grants the full management of system by PC.

The XP62 Net Pro supervision software enables the full remote control of network connected processors. ULAN peripheral is connected to PC through a USB connection. XP62 – ULAN connection is done by a simple 3 wires cable. In all cases where ULAN cannot be cabled to XP62 we can supply TR04 radio-modems with a reach of 400 mt.

Components for creating a supervision system:

- ULAN: Network server Pc (with USB connection)
- XNET: Network adapter card (one for each XP62)
- TR04: Radio-modem 485 (optional, to be used only when it is not possible to use the cable)



# Available options

Model	Description
<b>XP62</b>	Silo weight controller (DIN96 panel mounting)
<i>Options</i>	
<b>W01</b>	IP54 box for wall mounting + gasket + transparent cover
<b>TLC2</b>	Silo load cells digital amplifier (one for each silo)
<b>USBP</b>	USB IP65 external plug (to be mounted externally, for access to the USB without the need to access the back of the XP62)
<b>CWD</b>	Water counter
<b>HDY6</b>	Relay outputs extension
<b>XNET</b>	Network nodal point
<b>ULAN</b>	Network server Pc (with USB connection)
<b>TR04</b>	Radio-modem 485 (IP55 junction box with power supply 230/12v)
<b>CN5+U10</b>	Load cell 5000Kg IP68, compression type, stainless steel complete with cable and sheath from 5 mt.
<b>HP63/W</b>	Silos weight repeater (is a repeater of the silos weight so the value can be easily read near the silos)

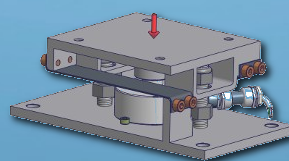


XP62

W01



XP63/W



CN5+U10



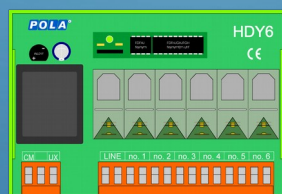
CWD



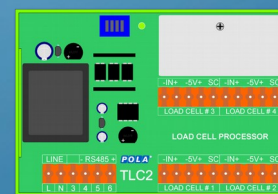
USBP



TR04



HDY6



TLC2



ULAN



XNET

**POLA**

[www.pola.it](http://www.pola.it)

40<sup>th</sup>

40 YEARS OF INNOVATION