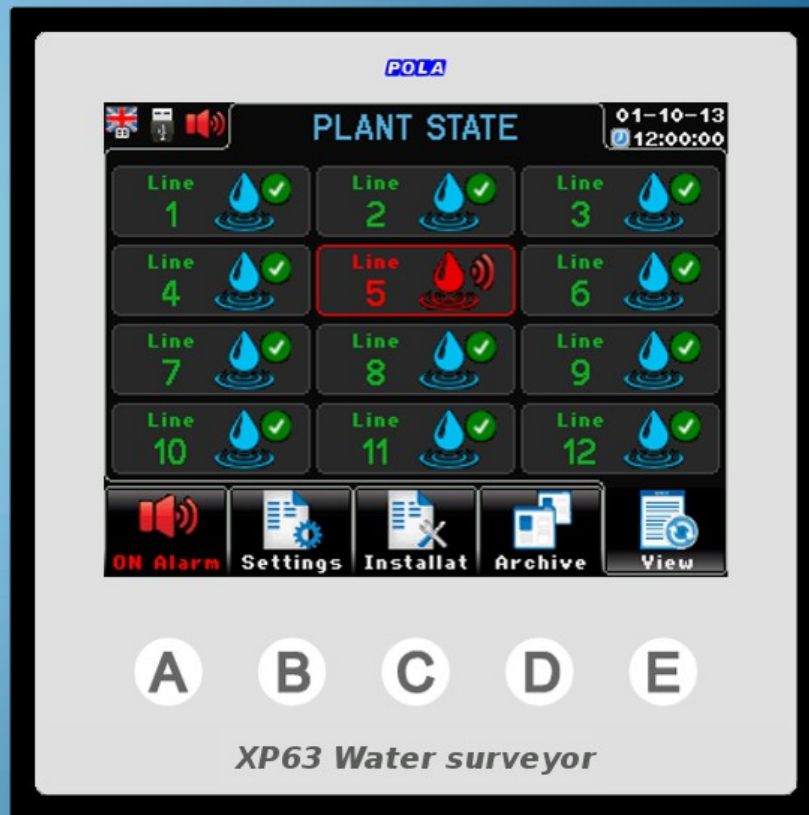


XP line
small size, great power



XP63 water surveyor



The main feature of the XP63 is the color display screen (3.5") with 320x240 dots resolution with led backlighting. XP63 is made in DIN 96x96 format and the module dimensions are 96x96mm.



The user interface is easy and friendly. The easy touch screen system gives both the typical "easy to use" approach of a touch screen system and the strength and mechanical protection of a polycarbonate IP54 keyboard.



At every screen the function keys display a different graphic making the program very user friendly.

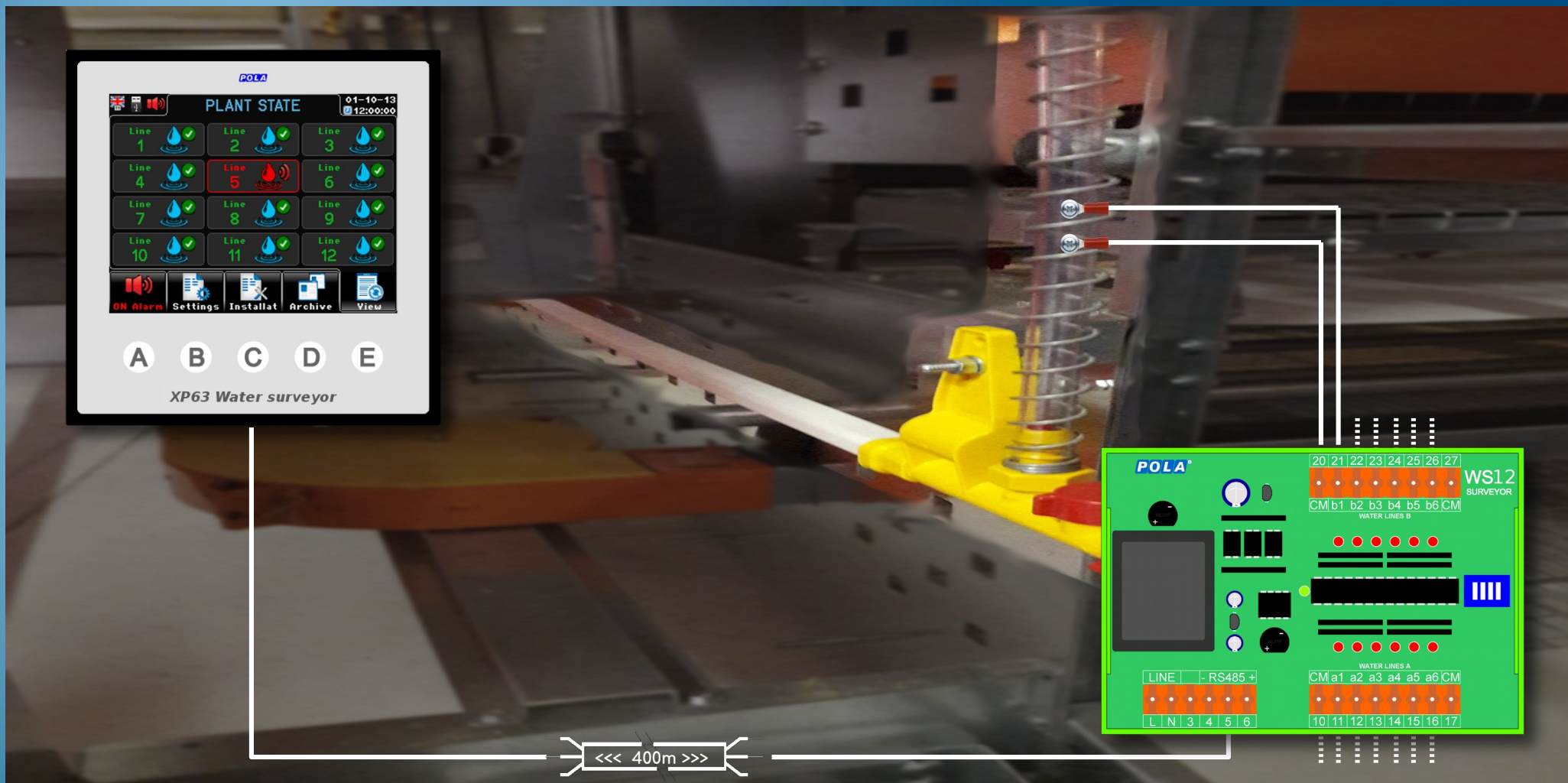
The user can select the display language: all the wordings, acronyms and "help" texts for programming assistance will be displayed in the chosen language.



Each programming step has its own help screen so the program has a "built in" instruction manual.



Water alarm management for drinking water lines



Water alarm for drinkers lines (max. 96 lines) for layer houses (in cages or aviaries).

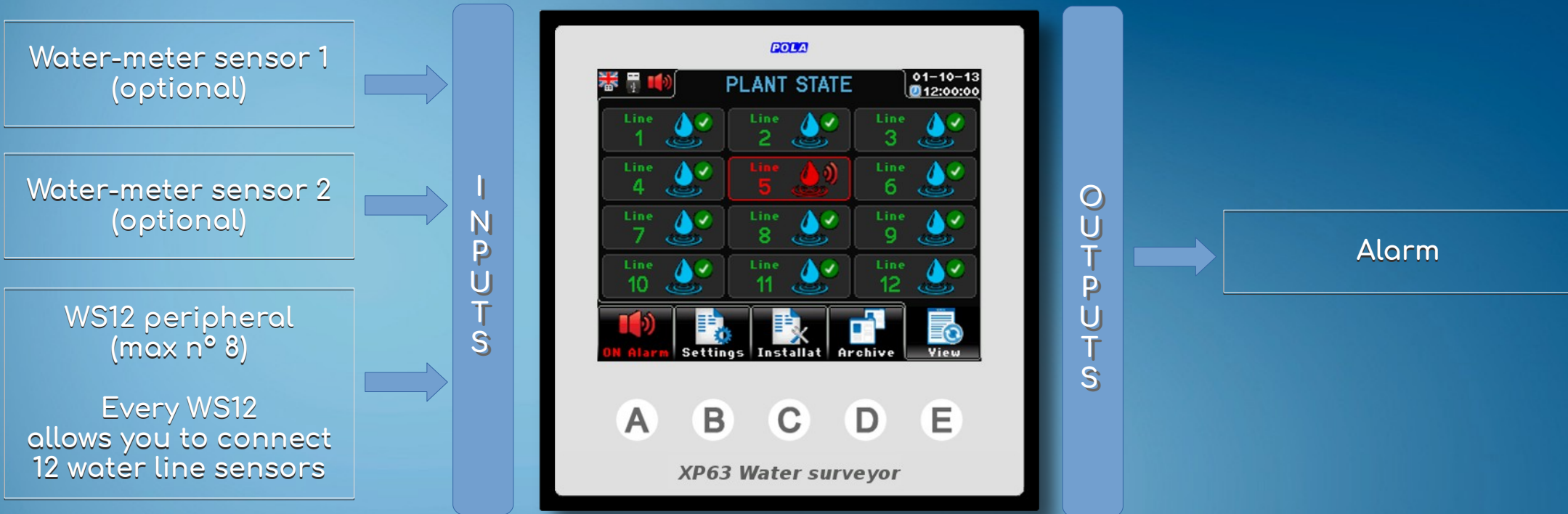
By this control you can diagnose the lack of water in one of the drinkers lines.

Water sensors are made by 2 stainless steel selftapping screws to be fitted to the terminal exhaust pipe of each drinkers line.

XP63 is connected by a serial bus to the WS12 peripheral. This allows to locally connect 12 line sensors. You can connect up to 8 WS12 extensions to reach 96 line sensors in total. The serial bus allows to place XP63 also at a considerable distance (400m) from the WS12 peripherals (placed close to the water line sensors).

Besides performing the water alarm for each line of drinkers (by the presence of water sensor installed on each line) you can record the water consumption by connecting a water meter (up to 2 water meters) so you can determine the min. and max. daily consumption (and alert in case of alarm) and also record the daily consumptions of the whole cycle.

Inputs and outputs



Other available connections

→ USB plug

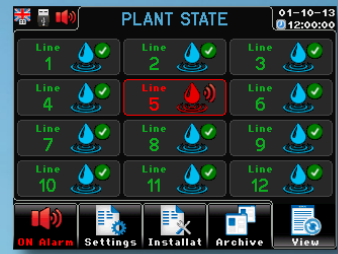
XP63 has a USB plug on the back.

When selecting the USBP option you can get a USB plug with a (IP65) protection cap externally mounted so you can access the USB without having to go to the back of the unit.

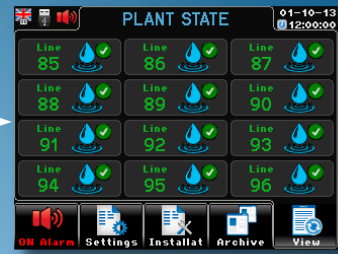
Sample screenshots



Viewing screens



viewing operating condition (1-12)



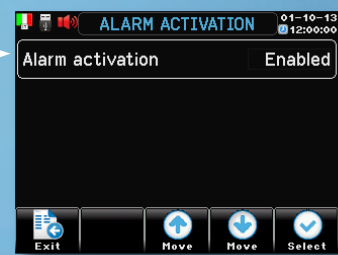
viewing operating condition (85-96)



Settings screens



Settings selection



Alarm activation



Manual alarm test



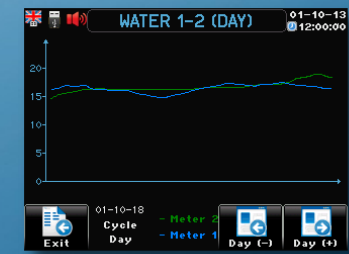
Archive screen



Archives to display selection

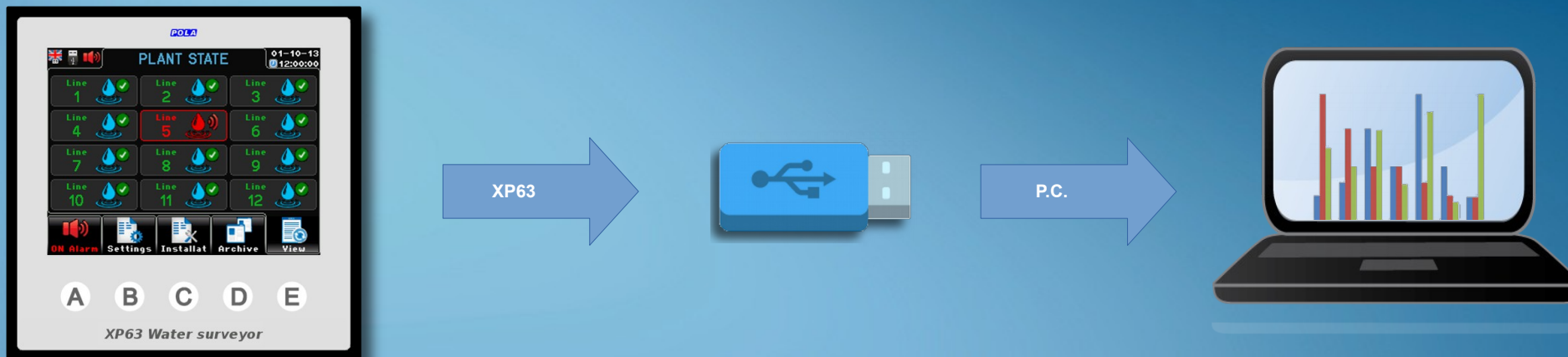


Daily water archive



Water cons. 1-2 charts

Data transfer



The communication with the outside world is performed by USB key.

→ **Export archives**

XP63 save in the USB memory a file containing all the day by day recorded data of the cycle.

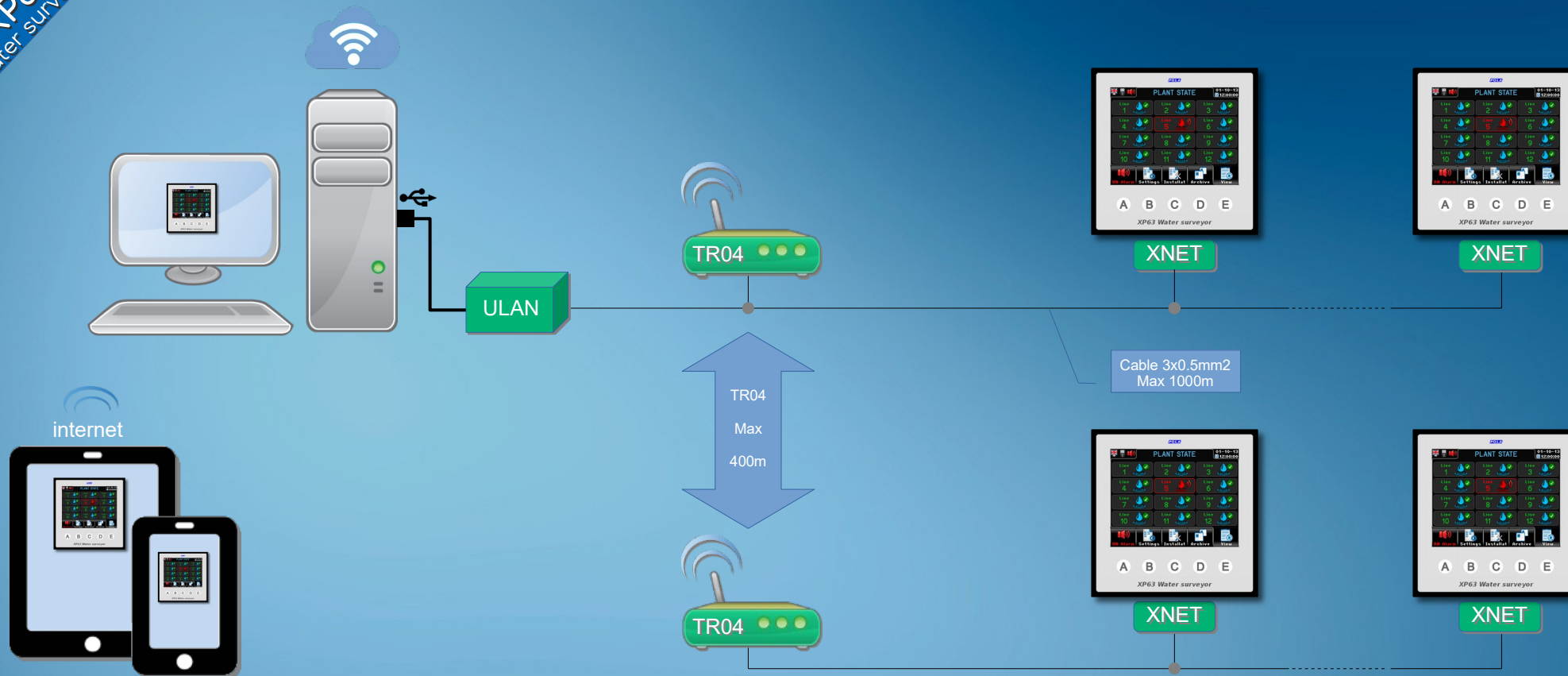
Connecting the USB key to a PC and by using the XP63 Dialogue software you can browse the recorded data in grid or graph formats.

→ **Importing / saving the setting**

You can save a file with all back-up infos on a USB file.

Saved settings can be uploaded on XP63 anytime by a user friendly procedure.

Remote supervision



Remote supervision of XP63 processors grants the full management of system by PC.

The XP63 Net Pro supervision software enables the full remote control of network connected processors. ULAN peripheral is connected to PC through a USB connection. XP63 – ULAN connection is done by a simple 3 wires cable. In all cases where ULAN cannot be cabled to XP63 we can supply TR04 radio-modems with a reach of 400 mt.

Components for creating a supervision system:

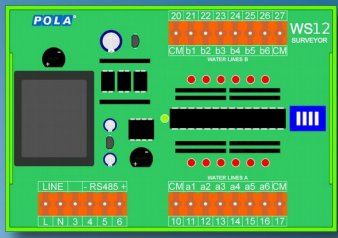
- ULAN: Network server Pc (with USB connection)
- XNET: Network adapter card (one for each XP63)
- TR04: Radio-modem 485 (optional, to be used only when it is not possible to use the cable)

Available options

<i>Model</i>	<i>Description</i>
XP63	Water alarm module for drinking lines
----- <i>Options</i> -----	
WS12	Peripheral acquisition 12 levels of water presence
W01	IP54 box for wall mounting + gasket + transparent cover
USBP	USB IP65 external plug (to be mounted externally, for access to the USB without the need to access the back of the XP63)
CWD	Water-counter
XNET	Network nodal point
ULAN	Network server Pc (with USB connection)
TR04	Radio-modem 485 (IP55 junction box with power supply 230/12v)



Available options



WS12



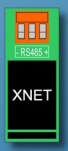
CWD



USB



ULAN



XNET



TR04

POLA

www.pola.it

40th

40 YEARS OF INNOVATION